



## **BRANCH OUT CONSULTING**

2635 SE 10th Street, Pompano Beach FL 33062

*Kirstie@branchoutconsultingllc.com*

*(954)-621-6324*

TO Evergreen Design Group  
1340 Environ Way  
Chapel Hill, NC 27517

Mary Bates  
*mary@evergreendesigngroup.com*  
o: 800.680.6630 x8  
c: 407.963.6864

RE: ISA Certified Arborist Report  
115 NW 16 ST Pompano  
Beach, FL 33060

This document is an evaluation of the location, size, and condition of all trees onsite and within the right-of-way at 115 NW 16 ST on April 9, 2025. All observations are visual from the ground. Tree locations were mapped as an overlay on existing survey. Existing property survey was cropped to depict tree locations and is not to scale. Palms are single trunk unless otherwise noted. DBH was measured as a sum of all codominant branches at breast height were applicable. Offsite tree measurements were visually estimated. This report is not a risk assessment. This report may be utilized for permitting purposes. Tree dispositions determined by others.

Thank you for the opportunity to help resolve your tree issues.

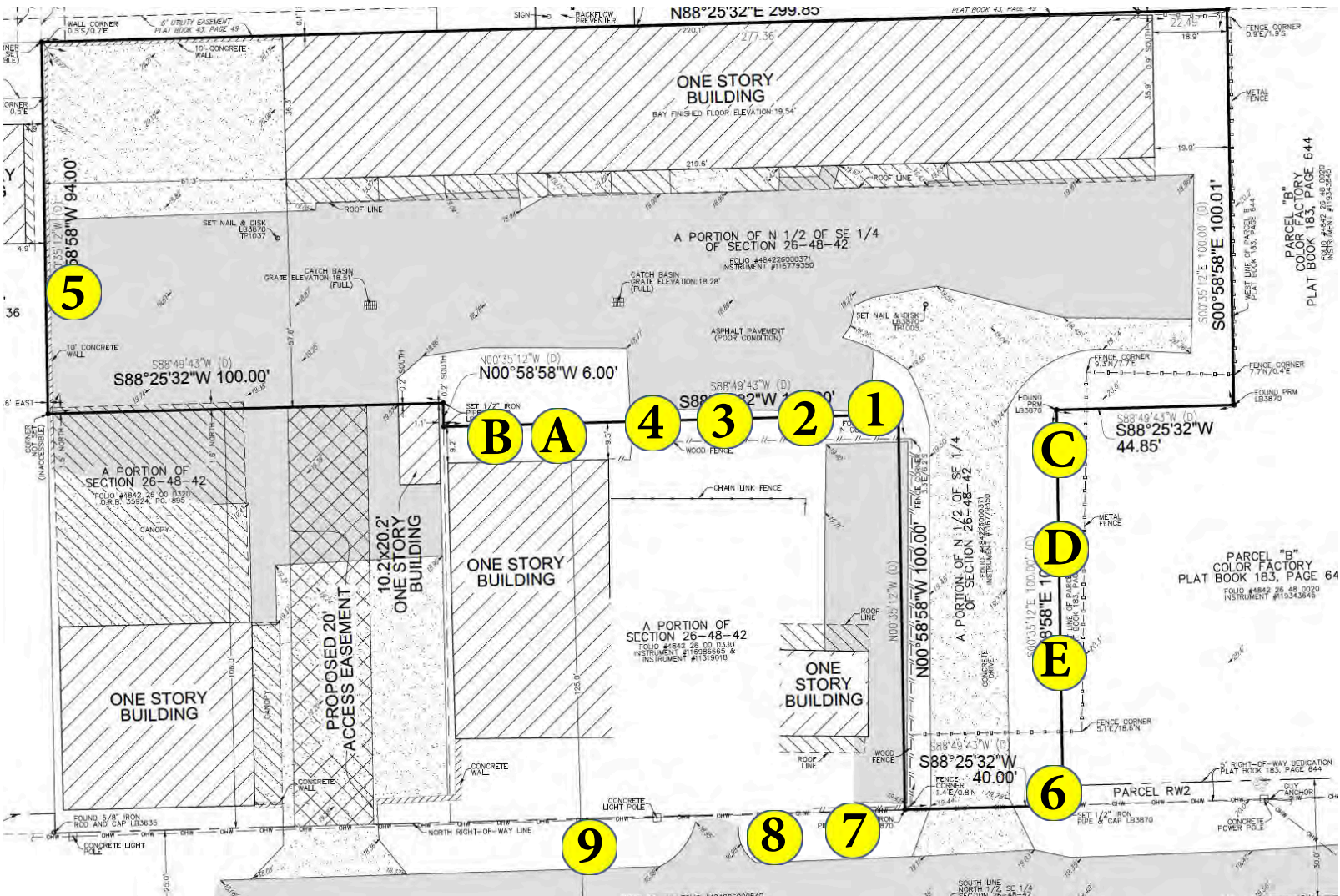
*ISA Certified Arborist FL-9601A*  
*Tree Risk Assessment Qualified (TRAQ)*  
*ASCA Professional Member*

**DRC**

**PZ25-12000014**

**07/02/2025**

## Tree Map



**DRC**

**PZ25-12000014**

07/02/2025

# Tree Matrix

Tree #	Common Name	Botanical Name	DBH (in)	Condition (%)	Height (ft)	Width (ft)	Canopy Coverage (%)	Appraisal Dollar Value	Notes	Disposition
1	Silver Buttonwood	<i>Conocarpus erectus</i>	4	70%	10	8	50	\$1,050.00	Severely limited root zone (LRZ). Trunk flair buried. Over-extended branches. Otherwise good health and	PROTECT
2	Silver Buttonwood	<i>Conocarpus erectus</i>	3.5	70%	10	9	64	\$919.00	LRZ. Mechanical trunk damage.	PROTECT
3	Silver Buttonwood	<i>Conocarpus erectus</i>	4	60%	10	9	64	\$900.00	LRZ. Tip dieback. Poor structure, leaning.	PROTECT
4	Silver Buttonwood	<i>Conocarpus erectus</i>	4	65%	11	12	113	\$975.00	LRZ. Circling/plunging roots.	PROTECT
5	Strangler Fig	<i>Ficus aurea</i>	10	40%	12	10	79	\$1,250.00	Volunteer. Severely limited root zone. Insect damage throughout most canopy foliage. DBH taken as sum of all 3	REMOVE
6	Live Oak	<i>Quercus virginiana</i>	33	75%	30	40	1257	\$13,922.00	Overhead wire conflict- utility pruned. Tip dieback 1-2" in diameter throughout canopy. Otherwise good health and	PROTECT
7	Silver Buttonwood	<i>Conocarpus erectus</i>	3.5	60%	10	10	79	\$788.00	Trunk girdled by wellington tape in lower half. Circling roots.	PROTECT
8	Silver Buttonwood	<i>Conocarpus erectus</i>	6.5	90%	14	12	113	\$2,194.00	Excellent.	PROTECT
9	Silver Buttonwood	<i>Conocarpus erectus</i>	4.5	60%	11	10	79	\$1,013.00	Tip dieback. Slight trunk lean.	PROTECT
A	Silver Buttonwood	<i>Conocarpus erectus</i>	N/A	N/A	10	16	201	N/A	OFFSITE.	PROTECT
B	Silver Buttonwood	<i>Conocarpus erectus</i>	N/A	N/A	10	8	50	N/A	OFFSITE.	PROTECT
C	Silver Buttonwood	<i>Conocarpus erectus</i>	2	55%	9	7	38	N/A	OFFSITE.	PROTECT
D	Foxtail Palm	<i>Wodyetia bifurcata</i>		30%	10	5	20	N/A	OFFSITE.	PROTECT
E	Silver Buttonwood	<i>Conocarpus erectus</i>	2	60%	8	12	113	N/A	OFFSITE.	PROTECT

**DRC**

# 14.40 Appraisal Worksheet

Tree #	Common Name	Botanical Name	DBH inches (Trees)/OH	Replacement Tree Caliper (inches)	Wholesale Cost	Cost Installed	\$ Per Diameter Inch	Value Removed	Diminutive Factor (Condition %)	Final Appraised Value
1	Silver Buttonwood	<i>Conocarpus erectus</i>	4	2	\$300.00	\$750.00	\$375.00	\$1,500.00	70%	\$1,050.00
2	Silver Buttonwood	<i>Conocarpus erectus</i>	3.5	2	\$300.00	\$750.00	\$375.00	\$1,313.00	70%	\$919.00
3	Silver Buttonwood	<i>Conocarpus erectus</i>	4	2	\$300.00	\$750.00	\$375.00	\$1,500.00	60%	\$900.00
4	Silver Buttonwood	<i>Conocarpus erectus</i>	4	2	\$300.00	\$750.00	\$375.00	\$1,500.00	65%	\$975.00
5	Strangler Fig	<i>Ficus aurea</i>	10	2	\$250.00	\$625.00	\$312.50	\$3,125.00	40%	\$1,250.00
6	Live Oak	<i>Quercus virginiana</i>	33	6	\$1,350.00	\$3,375.00	\$562.50	\$18,562.50	75%	\$13,922.00
7	Silver Buttonwood	<i>Conocarpus erectus</i>	3.5	2	\$300.00	\$750.00	\$375.00	\$1,313.00	60%	\$788.00
8	Silver Buttonwood	<i>Conocarpus erectus</i>	6.5	2	\$300.00	\$750.00	\$375.00	\$2,437.50	90%	\$2,194.00
9	Silver Buttonwood	<i>Conocarpus erectus</i>	4.5	2	\$300.00	\$750.00	\$375.00	\$1,687.50	60%	\$1,013.00

**DRC**

**PZ25-12000014**

**07/02/2025**





DRC

PZ25-12000014

07/02/2025





**DRC**

**PZ25-12000014**

**07/02/2025**





**DRC**

**PZ25-12000014**

**07/02/2025**





**DRC**

**PZ25-12000014**

**07/02/2025**





**DRC**

**PZ25-12000014**

**07/02/2025**





6

DRC





DRC

PZ25-12000014

07/02/2025





DRC

PZ25-12000014

07/02/2025





**DRC**

**PZ25-12000014**

**07/02/2025**





**DRC**

PZ25-12000014

07/02/2025





DRC

PZ25-12000014

07/02/2025





**DRC**

**PZ25-12000014**

**07/02/2025**



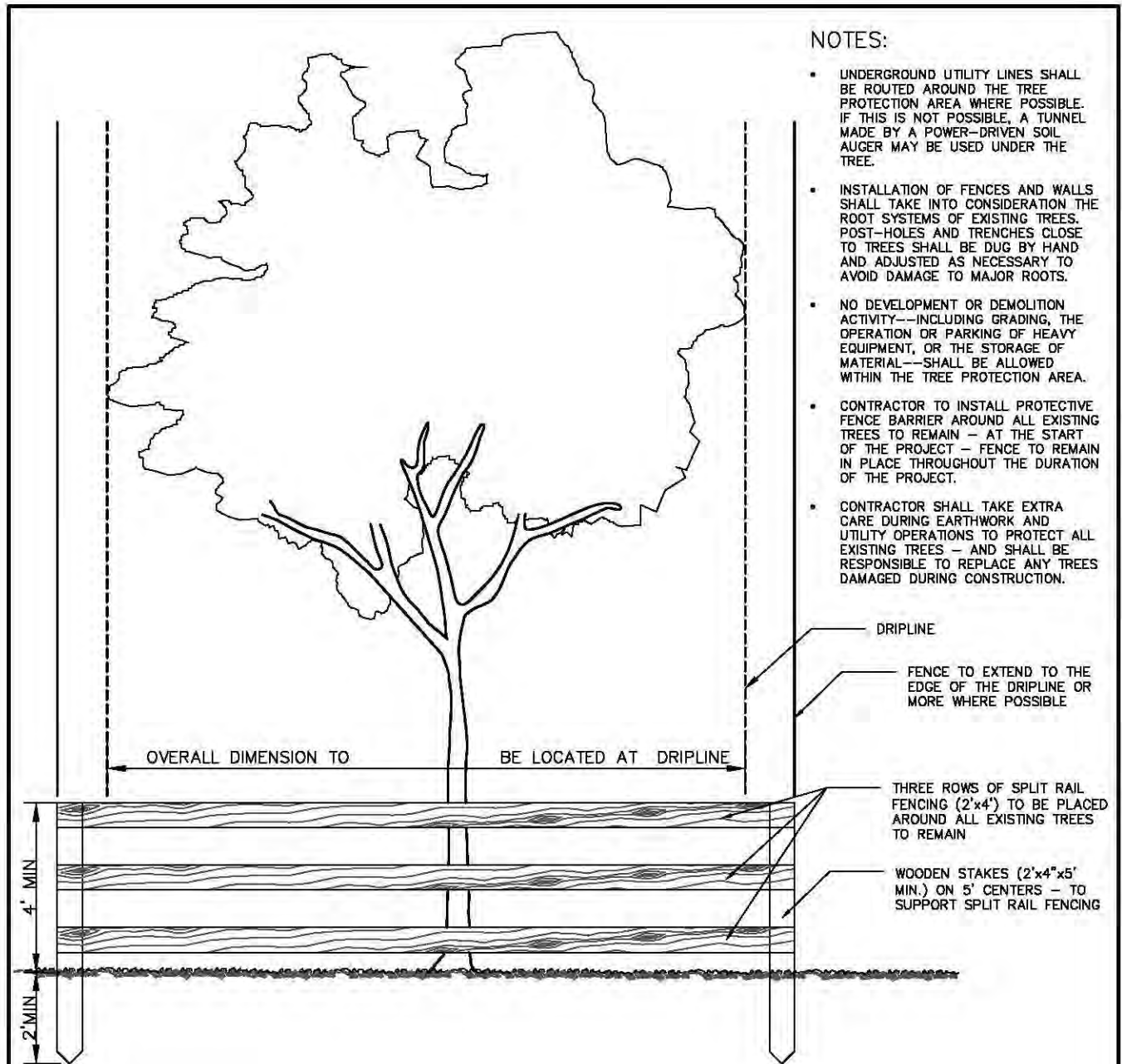


DRC

PZ25-12000014

07/02/2025





NOTE: BARRIER TO FORM CONTINUOUS CIRCLE AROUND THE TREE OR GROUP OF TREES. SEE LANDSCAPE PLAN FOR LOCATION OF TREES TO REMAIN.

## TREE PROTECTION DETAIL

### LANDSCAPE STANDARDS

REVISIONS		URBAN FORESTRY CITY OF POMPANO BEACH	TREE PROTECTION DETAIL	
BY	DATE		APPROVED BY:	DATE: SEP 2021
TCW	04/2010	SCALE: N.T.S.	URBAN FORESTER	DWG. NO.
AS	09/2021			104-1